



# COMPANY AND PRODUCT OVERVIEW

"Simply Reliable"





# BETTER PERISTALTIC AND HOSE PUMP SOLUTIONS



Albin Pump is the expert in delivering peristaltic pumps that have been engineered with decades of industry experience to provide the performance, design simplicity and reliability our customers demand to achieve the lowest total cost of ownership.

Founded in 1928, Albin Pump is a leading manufacturer of electric peristaltic pumps, and is part of the Fluid sector of Ingersoll Rand including premium brands such as: ARO, Milton Roy, Thomas, Dosatron, Haskel and more.

## MARKETS AND APPLICATIONS



**Water/Wastewater** – Lime water, granular activated carbon (GAC), sodium hypochlorite, ferric chloride, sodium bisulfite, fluoride, polymers, aqueous ammonia, potassium, permanganate, caustic soda, and many more



**Mining/Quarries** – Sludge, viscous fluids, mud, clay, fluids with high solid content, light concrete, lead sulfate, pyrite, SABX, cyanide, various acids



**Chemical** – Corrosive acids and bases, latex, alcohol, soap, shampoo, cleaning agents, non aromatic solvents, chemical dosing, paint, water based paint, acrylics, pigments, ink, wall coating



**Food and Beverage** – Yeast, diatomaceous earth, egg white and yolk, fats, olive oil, wine, semolina, water and salt mixtures, natural flavorings, bakery dough/batter, cream, sugar mills, molasses, liquid sugar, liquid protein, syrups



**General and Other Industries** – Kaolin, pulp and paper waste sludge, manure, fertilizer, ceramic glaze, mold filling, titanium dioxide filter press feeding, building fibrous mortar, plaster, liquid cement



## PUMP BENEFITS

- ✓ Best total cost of ownership
- ✓ High quality with a longer hose life
- ✓ Faster and easier maintenance
- ✓ Better service
- ✓ Competitive lead time
- ✓ Attractive pricing
- ✓ Low shear
- ✓ Predictable performance with subsequent cost savings
- ✓ Available in many different sizes for flow rates up to 144m<sup>3</sup>/h (635 gpm)



## PUMP FEATURES






- ✓ Fully self-priming
- ✓ Damage-free continuous dry running
- ✓ No mechanical seal nor packing gland
- ✓ Suitable for abrasive, corrosive or viscous fluids
- ✓ Easy installation, operation and maintenance
- ✓ Reversible flow
- ✓ Low sound level
- ✓ Perfect volumetric flow
- ✓ Accurate and repeatable dosing and metering
- ✓ Long life and greater reliability
- ✓ Lowest cost of ownership
- ✓ Stainless steel screws



## HOSE FEATURES AND BENEFITS

- ✓ Highest quality compound rubber
- ✓ Long life material and structure with inner reinforcement layers
- ✓ Suitable for pressure up to 15 bar (220 psi)
- ✓ Available in 7 different rubber compounds and in 16 different sizes to fit most competitor pumps

## OUR PERISTALTIC PUMP RANGE

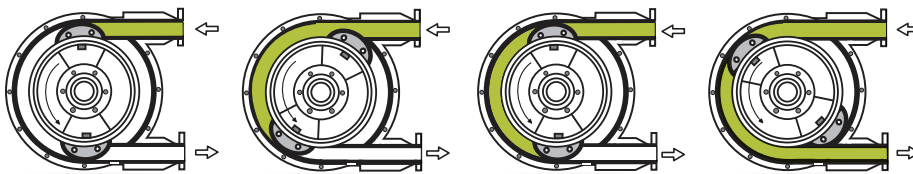
 PUMP MODEL	 MAX FLOW	 RECOMMENDED FLOW RANGE	 MAX PRESSURE	 PUMP WEIGHT	 PUMP CONNECTION
<b>ALH / High Pressure Hose Pump</b>					
ALH05-3	20,4 l/h (5 gph)	4,1 - 14,3 l/h (1-4 gph)	8 bar (115 psi)	25 kg (55 lb)	Hose tail Ø 16mm (5/8 in)
ALH10-3	70 l/h (18 gph)	12 - 42 l/h (3-11 gph)	10 bar (145 psi)	28 kg (62 lb)	Hose tail Ø 16 mm (5/8 in)
ALH10	180 l/h (48 gph)	18 - 90 l/h (5-24 gph)	10 bar (145 psi)	25 kg (55 lb)	Hose tail Ø 16 mm (5/8 in)
ALH15-3	420 l/h (111 gph)	42 - 147 l/h (11-39 gph)	10 bar (145 psi)	35 kg (77 lb)	Hose tail Ø 20 mm (7/8 in)
ALH15	600 l/h (159 gph)	60 - 315 l/h (16-83 gph)	10 bar (145 psi)	35 kg (77 lb)	Hose tail Ø 20 mm (7/8 in)
<b>ALH20-3</b>	<b>670 l/h (177 gph)</b>	<b>71 - 291 l/h (19-77 gph)</b>	<b>10 bar (145 psi)</b>	<b>36 kg (79 lb)</b>	<b>Hose tail Ø 25 mm (1 in)</b>
ALH20	1,020 l/h (269 gph)	102 - 535 l/h (27-141 gph)	10 bar (145 psi)	36 kg (79 lb)	Hose tail Ø 25 mm (1 in)
<b>ALH25</b>	<b>2,2 m3/h (10 gpm)</b>	<b>0,3 - 1 m3/h (1,4-4,3 gpm)</b>	<b>15 bar (220 psi)</b>	<b>80 kg (176 lb)</b>	<b>Flange DN25/PN16 (1"/150#)</b>
ALH32	5,3 m3/h (23 gpm)	0,8 - 2,3 m3/h (3,3-10 gpm)	15 bar (220 psi)	145 kg (320 lb)	Flange DN32/PN16 (1.25 in/150#)
<b>ALH40</b>	<b>8,2 m3/h (36 gpm)</b>	<b>1,3 - 3,6 m3/h (5,2-15,7 gpm)</b>	<b>15 bar (220 psi)</b>	<b>145 kg (320 lb)</b>	<b>Flange DN40/PN16 (1.5 in/150#)</b>
ALHX40	9,6 m3/h (42 gpm)	2 - 5 m3/h (8,8-22 gpm)	15 bar (220 psi)	210 kg (463 lb)	Flange DN40/PN16 (1.5 in/150#)
ALH50	15,8 m3/h (70 gpm)	3,5 - 10,3 m3/h (15-45 gpm)	15 bar (220 psi)	315 kg (694 lb)	Flange DN50/PN16 (2 in/150#)
ALH65	20,7 m3/h (91 gpm)	4,6 - 13,6 m3/h (20-60 gpm)	15 bar (220 psi)	335 kg (739 lb)	Flange DN65/PN16 (2.5 in/150#)
ALHX80	27,5 m3/h (121 gpm)	10,4 - 20,9 m3/h (46-92 gpm)	15 bar (220 psi)	700 kg (1543 lb)	Flange DN80/PN16 (3 in/150#)
ALH80	35 m3/h (154 gpm)	13,3 - 18,9 m3/h (59-83 gpm)	15 bar (220 psi)	970 kg (2138 lb)	Flange DN80/PN16 (3 in/150#)
ALH100	54 m3/h (238 gpm)	21,6 - 37,2 m3/h (95-164 gpm)	15 bar (220 psi)	1270 kg (2800 lb)	Flange DN100/PN16 (4 in/150#)
ALH125	88 m3/h (387 gpm)	44 - 83 m3/h (194-365 gpm)	15 bar (220 psi)	1800 kg (3968 lb)	Flange DN125/PN16 (5 in/150#)
<b>ALP / Low Pressure Tube Pump</b>					
ALP09N	140 l/h (37 gph)	14 - 70 l/h (4-18 gph)	4 bar (60 psi)	8 kg (18 lb)	Hose tail Ø 16mm (5/8 in)
ALP13N	348 l/h (92 gph)	34 - 171 l/h (9-45 gph)	4 bar (60 psi)	9 kg (20 lb)	Hose tail Ø 19 mm (3/4 in)
ALP17N	910 l/h (240 gph)	91 - 448 l/h (24-118 gph)	4 bar (60 psi)	15 kg (33 lb)	Hose tail Ø 25 mm (1 in)
ALP25N	2,71 m3/h (12 gpm)	0,3 - 1,7 m3/h (1-8 gpm)	4 bar (60 psi)	55 kg (121 lb)	Hose tail Ø 38 mm (1.5 in)
ALP30N	4,98 m3/h (22 gpm)	1 - 3,5 m3/h (4-15 gpm)	4 bar (60 psi)	97 kg (214 lb)	Hose tail Ø 45 mm (2 in)
ALP45N	13,9 m3/h (61 gpm)	2,3 - 8 m3/h (10-35 gpm)	4 bar (60 psi)	155 kg (342 lb)	Hose tail Ø 60 mm (2.5 in)

## EXAMPLE OF AVAILABLE OPTIONS

Duplex pump (dual pumps), special connection such as SMS, Tri-clamp, DIN, ANSI, JIS... Hose rupture detector and revolution counter, ATEX II & I execution, variable speed drive, mobile trolley and more.



## PUMP OPERATION



## APPLICATIONS



ALH125 crude oil pumping



ALP30N lime dosing



ALHX80 for filter press feeding

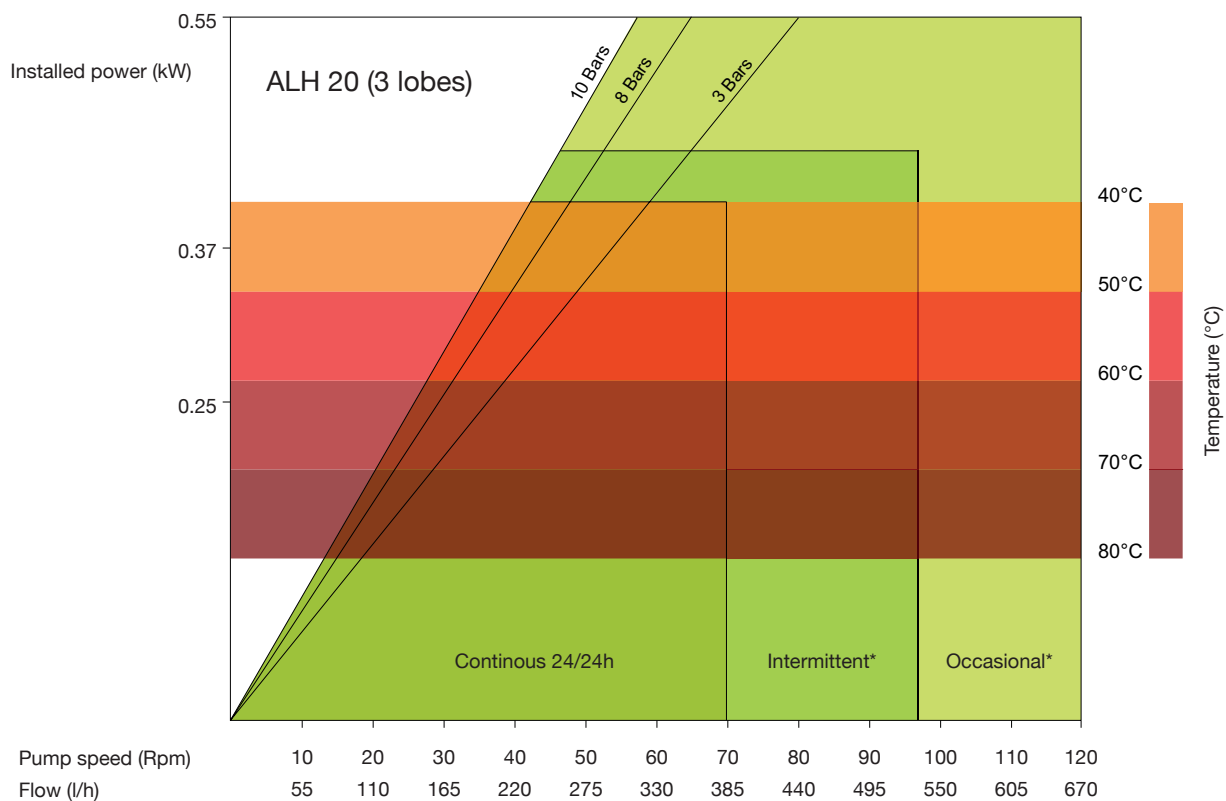


ALX150 and ALH125 for chemical dosing, mining process

# ALH20 - 3 LOBES - DATA SHEET

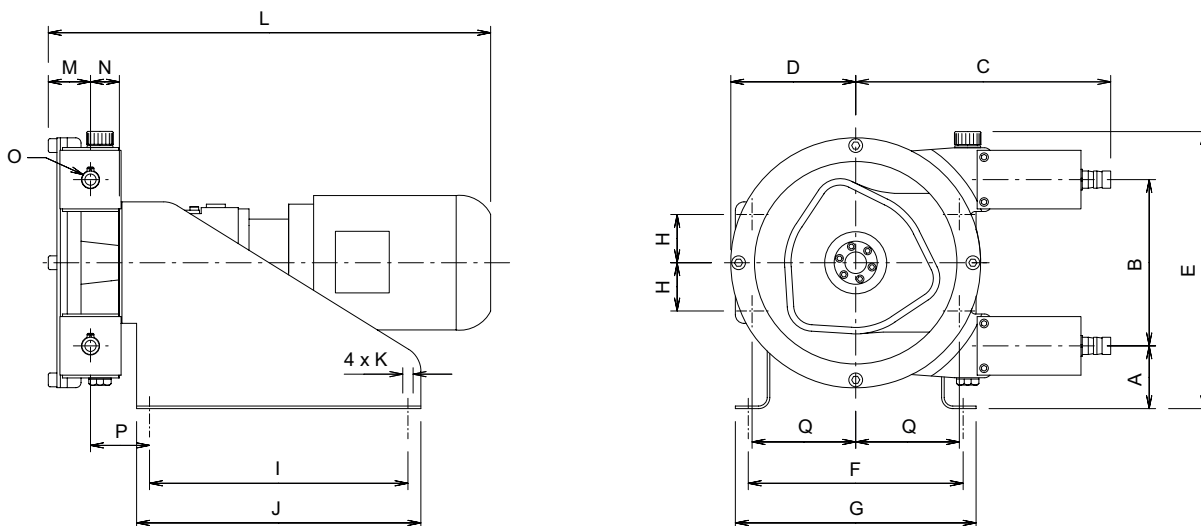
# ALH

albin  
pump  
since 1928



\*Intermittent use : minimum one hour stop after 2 hours run / \*Occasional use : maximum one hour a day

## DIMENSIONS



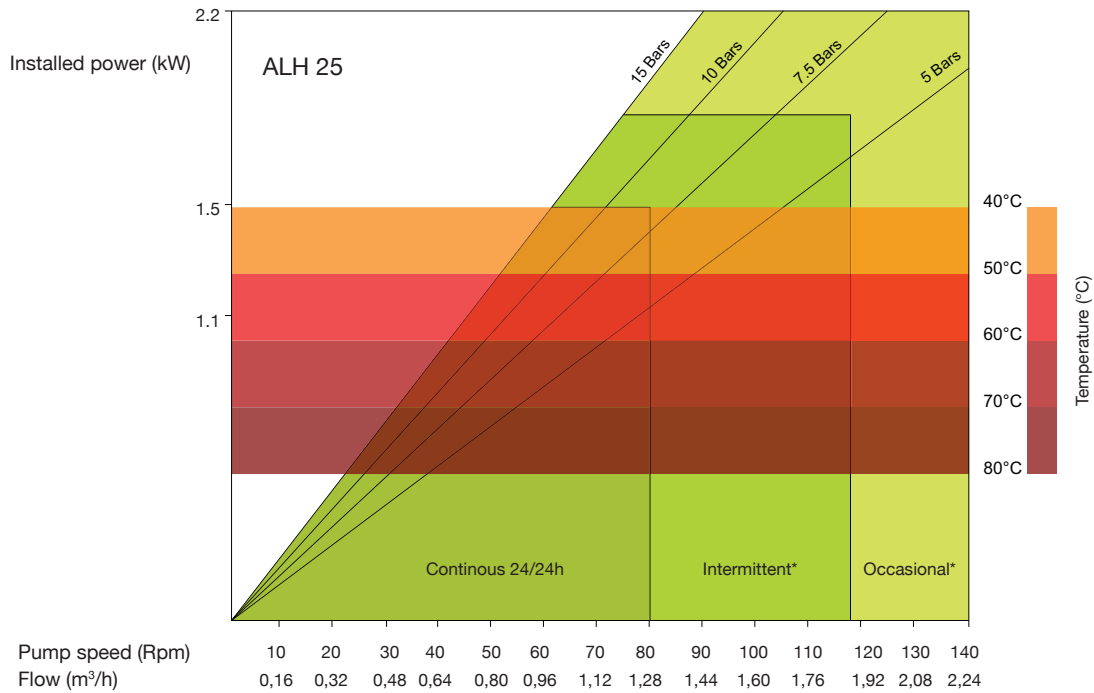
TYPE	A	B	C	D	E	F	G	H	I	J	K	L	M	N	O	P	Q
ALH 20	73	193	297	145	325	249	280	52	300	330	4xø13	-	46	35,5	ø25 *	70,5	124,8

\* Hose tail

# ALH25 - DATA SHEET

# ALH

albin  
pump  
since 1928

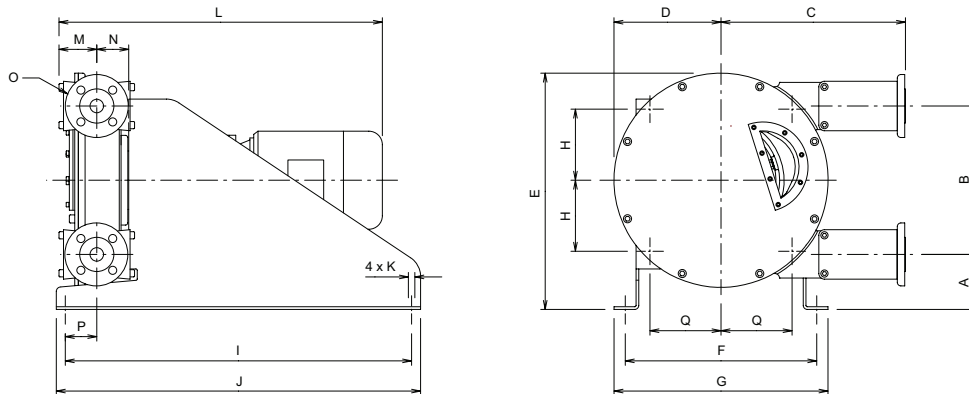


\*Intermittent use : minimum one hour stop after 2 hours run / \*Occasional use : maximum one hour a day

SHOE SHIMMING TABLE - ALH 25		
Pressure bar (psi)	Speed - Rpm	Number of shims - thickness 0.5 mm
$\Delta P \leq 5$ (72,5)	0 to 40	0
	40 to 160	0
$5 (72,5) \leq \Delta P \leq 7,5$ (108,75)	0 to 40	2
	40 to 125	1
$7,5 (108,75) \leq \Delta P \leq 10$ (145)	0 to 40	3
	40 to 105	2
$10 (145) \leq \Delta P \leq 15$ (217,5)	0 to 40	4
	40 to 90	3

**Beware :** remove one shim if temperature exceeds 60° Celsius (140° Fahrenheit)

## DIMENSIONS



TYPE	A	B	C	D	E	F	G	H	I	J	K	L	M	N	O	P	Q
ALH 25	95	262	356	134	430	307	347	110	520	550	4xø13	-	62	62	DN25 PN16	71	110

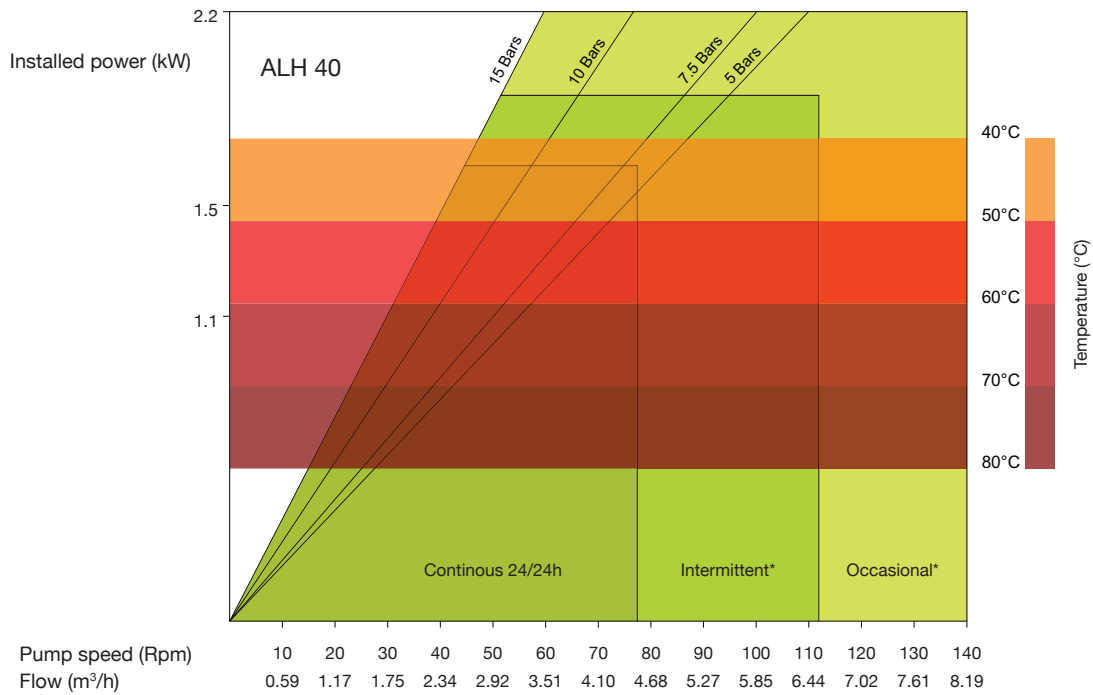
Đại lý bơm Albin Pump tại Việt Nam

Tel: 096 2042 688 - macxa.com.vn | macxa.vn - sales@macxa.com.vn

# ALH40 - DATA SHEET

# ALH

albin  
pump  
since 1928

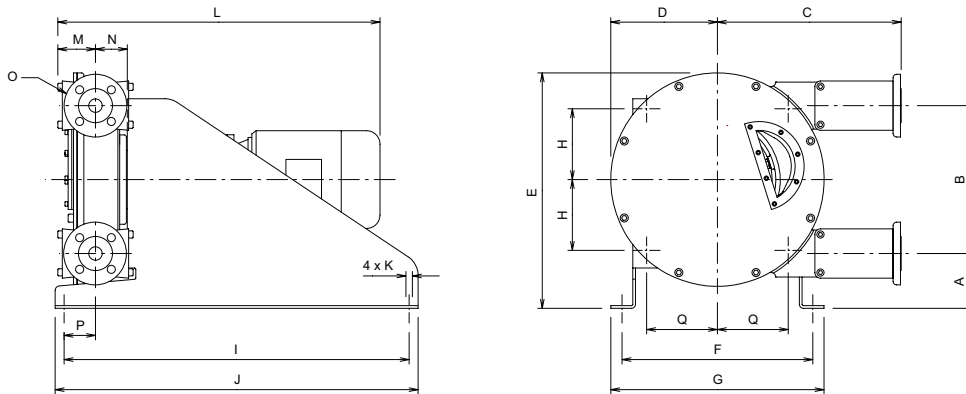


\*Intermittent use : minimum one hour stop after 2 hours run / \*Occasional use : maximum one hour a day

SHOE SHIMMING TABLE - ALH 40		
Pressure bar (psi)	Speed - Rpm	Number of shims - thickness 0.5 mm
$\Delta P \leq 5$ (72,5)	0 to 40	0
	40 to 160	0
$5$ (72,5) $\leq \Delta P \leq 7,5$ (108,75)	0 to 40	2
	40 to 125	1
$7,5$ (108,75) $\leq \Delta P \leq 10$ (145)	0 to 40	3
	40 to 105	2
$10$ (145) $\leq \Delta P \leq 15$ (217,5)	0 to 40	4
	40 to 90	3

**Beware :** remove one shim if temperature exceeds 60° Celsius (140° Fahrenheit)

## DIMENSIONS



TYPE	A	B	C	D	E	F	G	H	I	J	K	L	M	N	O	P	Q
ALH 40	121	330	438	237	524	424	474	158	770	800	4xø13	-	85	75	DN40 PN16	91,5	158

Đại lý bơm Albin Pump tại Việt Nam

Tel: 096 2042 688 - macxa.com.vn | macxa.vn - sales@macxa.com.vn